

# Naval Dockyards Society Conference: 4 April 2020 11-4.30

## Where Empires Collide: Dockyards and Naval Bases in and around the Indian Ocean

### National Maritime Museum, Greenwich

Web: <https://navaldockyards.org/>

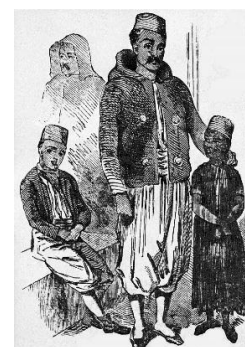
Facebook: NavalDockyardsSociety

Twitter: @DockyardSociety

This one-day conference will examine the role and scope of naval bases and naval support facilities in and around the Indian Ocean.

Were bases built to defend colonies, control colonies, or to attack the enemy? Were they to suppress local forces, engage companies threatening the British East India Company or as adjuncts to European struggles? How useful were they to their founding countries in the 17th–20th centuries? How has their heritage developed?

Seamen of the early nineteenth century Omani navy seen during a visit to Portsmouth Dockyard



#### Programme:

##### 11–1.00 Morning Chair Paul Brown

11–11.30 Philip MacDougall *In Support of Napoleon's Great Adventure - the navy of Tipu Sultan. Its design, construction and purpose*

11.30–12.00 Karim Malak *The Anglo-Egyptian Naval Encounter: A new history of Egypt and Britain*

12.00–12.30 Patricia O'Sullivan *Out of the Shadows - the Police Force of Hong Kong's Royal Naval Dockyard*

12.30–1.00 Amit Gupta *Indian Naval Shipbuilding and Bases: The impact of heritage and being a successor state*

##### Lunch 1–2.00 in the Propeller Area

##### 2–4.30 Afternoon Chair John Day

2–2.30 David Erickson *The Contribution of Simon's Town to Diplomatic & Naval Affairs, 1795–1957*

2.30–3.00 Erik Odegard *Dutch, French and British planners and Trincomalee naval dockyard*

3–3.30 Richard Holme *Trincomalee in the twentieth century: The use of floating docks in the Indian Ocean*

3.30–4.00 Robert Ivermee *The Hooghly River and the limits of colonial power: European dockyards and naval bases in Bengal*

4–4.30 Benjamin Jennings *'The richest and most fruitful island in the world': The allure of Madagascar and French ambition at Fort Dauphin 1643–1674*

**4.30 END**